

**Saint Mary's Catholic College
South Burnett**

Mission Statement

Saint Mary's Catholic College, South Burnett seeks to educate the whole person in Gospel Values and Catholic ethos within an ever changing world while respecting the beliefs and traditions of other religious denominations and cultures.

The school's motto "Realise Your Dignity" sets the climate which encourages cooperation and unity between parents, staff and students and an ongoing self-renewal.

The College does this by offering a flexible and evolving curriculum seeking to include a desire for learning, a respect for truth and development of self-motivation and self-discipline.

Saint Mary's Catholic College

***10 Kent Street
Kingaroy***

School Contact Details

Phone: (07) 4160 0900

Fax: (07) 4162 1581

Email: pskingaroy@bne.catholic.edu.au

Website: www.saintmarys.qld.edu.au



***School Contact
Personnel***

Principal: Mrs Angela Myles

Support Teacher (IE): Ms Louise Kennedy

Guidance Counsellor: Mr Graham Turnbull

Brisbane Catholic Education Office



Teaching Challenging Transforming

Enrolment Application

and

Support Procedures

for

Students requiring Significant

Educational Adjustments



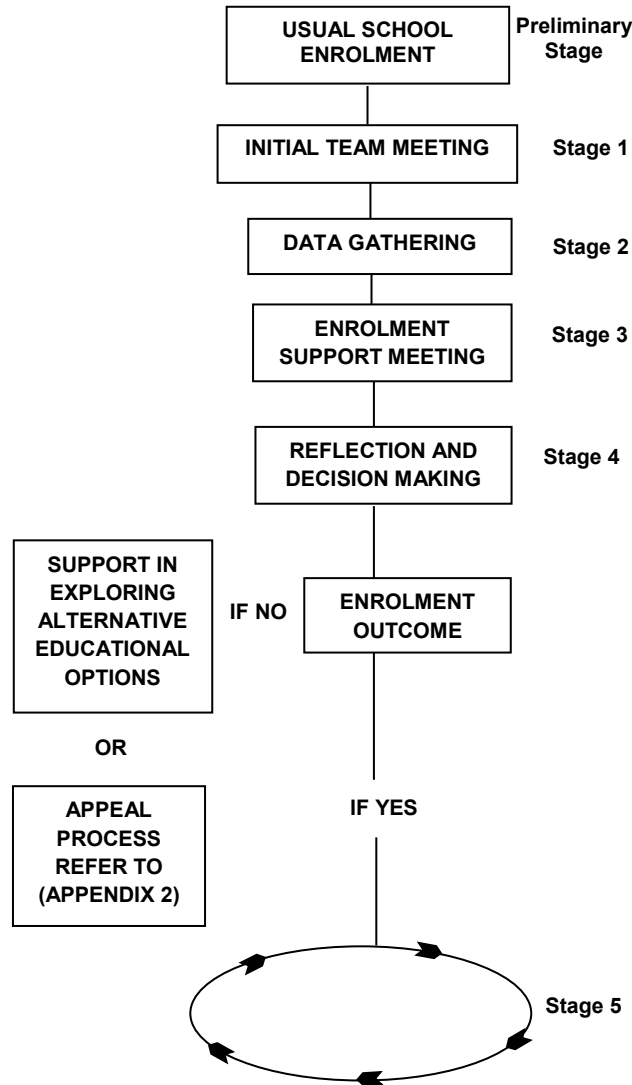
Introduction and Rationale

The Enrolment Application and Support Procedures for Students requiring Significant Educational Adjustments operates within the Policy – Students with Disabilities for Brisbane Catholic Education schools. This policy statement, consistent with the Vision Statement and Strategic Renewal Framework 2007-2011, reflects the ongoing commitment of Brisbane Catholic Education to the incorporation of inclusive practices in schools and is guided by the principles of justice as reflected with Church, education and legal areas. The enrolment of a student requiring significant educational adjustments is the concern of the whole school community within the church.

The process seeks to reveal and clarify the characteristics of the learner, and to assess the relevant adjustments for accessing the learning and the implications of these for the school, the family and the student.

A partnership approach is foundational to this process and leads to an appropriate response to the student’s educational needs. The enrolment application and support procedures are used when it is considered likely that significant educational adjustments will be needed to support a student’s initial enrolment and/or for ongoing service provision.

ENROLMENT APPLICATION AND SUPPORT PROCEDURES For Students requiring Significant Educational Adjustments



Preliminary Stage

- Make Application for Enrolment



Stage 1 Parent Meeting

- **Student Enrolment Team meeting preparation**
- **Partnership Formed**



Stage 2 Data Gathering

- **Observe/Collect Data**
- **Explore Needs**



Stage 3 Enrolment Support Meeting

- **Examine Implications**
- **Partnership Strengthened**



Stage 4 Reflection & Decision Making

- **Principal Makes Decision**
- **Informs Relevant Others**



Stage 5 School Action Plan

- **Plan Action as Necessary**
- **Ongoing program monitoring & Review of adjustments**
- **Returning to Stage 2 (if necessary)**