

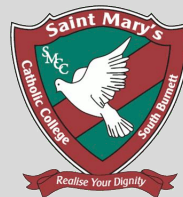


#### SAINT MARY'S CATHOLIC COLLEGE

10 Kent Street  
Kingaroy QLD 4610

#### SCHOOL CONTACT DETAILS

Phone: 07 4160 0900  
Email: [pskingaroy@bne.catholic.edu.au](mailto:pskingaroy@bne.catholic.edu.au)  
Website: [www.saintmarys.qld.edu.au](http://www.saintmarys.qld.edu.au)



#### SCHOOL CONTACT PERSONNEL

*Principal*

Ms Carmel O'Brien

*Support Teacher Inclusive Education*

Miss Claire Ritchie

*Guidance Counsellor*

Mr John Dalton



## Enrolment Application and Support Process for Students Requiring Significant Educational Adjustments

## **INTRODUCTION AND RATIONALE**

The Enrolment Application and Support Process (EASP) reflects the ongoing commitment of Brisbane Catholic Education (BCE) towards inclusive practices in schools and is guided by the principles of justice as reflected in Church, education, and legal areas.

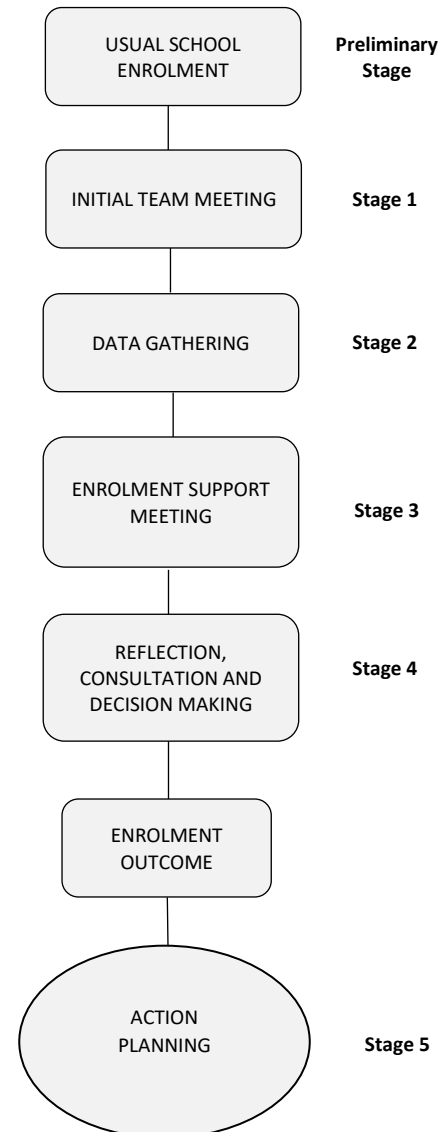
The consultation process seeks to reveal and clarify:

- The characteristics of the learner including impact of the disability
- The educational adjustments that are required for learning
- The implications of adjustments for the student, family and school

The EASP is to be applied for:

- **Initial** enrolment consideration: When application for enrolment is made on behalf of a student for whom it is considered likely that educational adjustments will be required to enable the student to participate in the curriculum and use facilities on the same basis as students without a disability

## **ENROLMENT APPLICATION AND SUPPORT PROCESS For Students Requiring Significant Educational Adjustments**



### **Preliminary Stage**

- Make application for enrolment

### **Stage 1 – Parent Meeting**

- Student Enrolment Team is formed
- Partnership formed

### **Stage 2 – Data Gathering**

- Observe/Collect data
- Explore educational adjustments

### **Stage 3 – Enrolment Support Meeting**

- Examine implications
- Information is shared, discussed, and clarified

### **Stage 4 – Reflection, Consultation and Decision Making**

- Principal in consultation with Student Enrolment Support Team makes decision
- Principal communicates decision to student's associates in writing

### **Stage 5 – Action Planning**

- Appoint Case Manager
- Develop School Action Plan